



Dell Optiplex SX280 Lower Fan Replacement

The fan below the Heat Sink and nearest the hard drive.

Written By: Tom



INTRODUCTION

Remove the Lower Fan from the computer tower.



TOOLS:

- [iFixit Opening Tools](#) (1)
-

Step 1 — Panel Cover



- ⚠ Make sure the computer is turned off, by selecting the start menu and choosing "Shut Down".
- ⚠ Ensure all cables, speakers and other devices are unplugged and turned off before opening the computer case.

Step 2



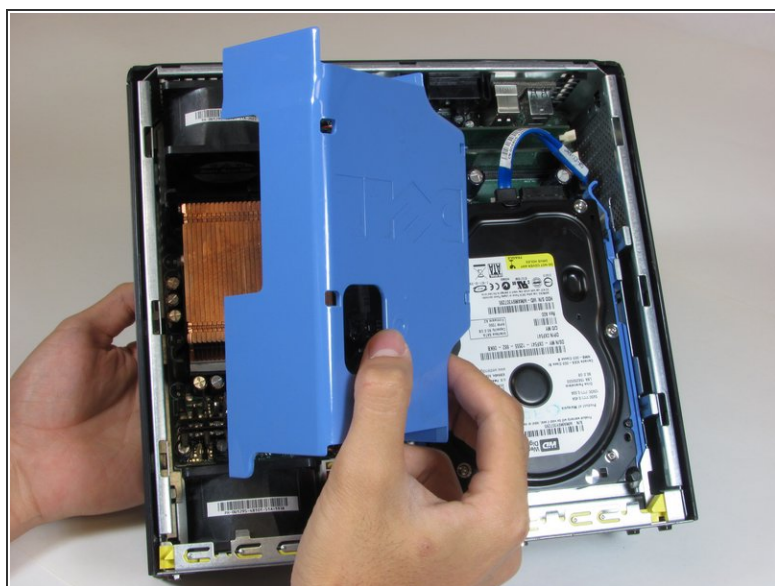
- Lay the computer on its side; you will see a blue knob.
- Turn this knob 90 deg clockwise.

Step 3



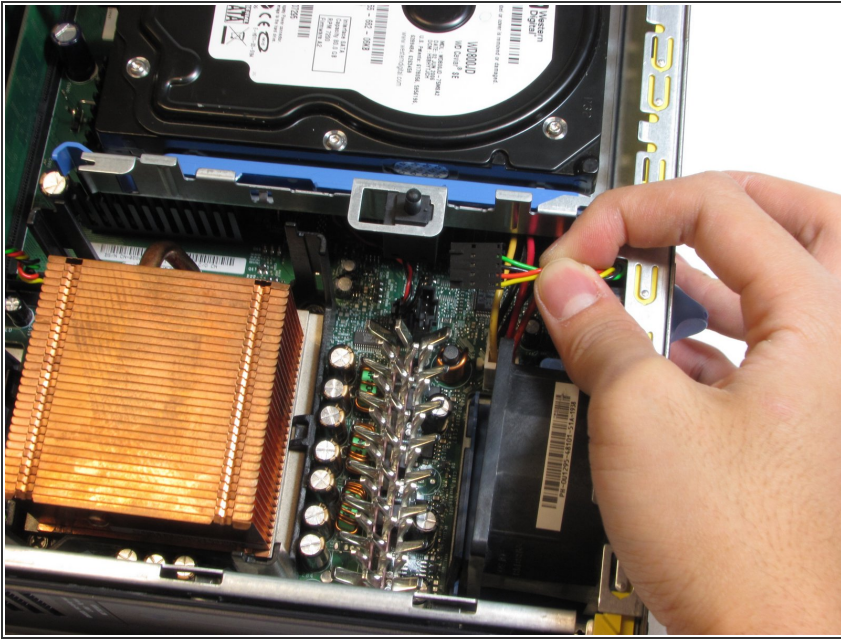
- Slide the panel case forward about 1/2 inch while knob is turned.
- Lift panel case off computer.

Step 4 — Lower Fan



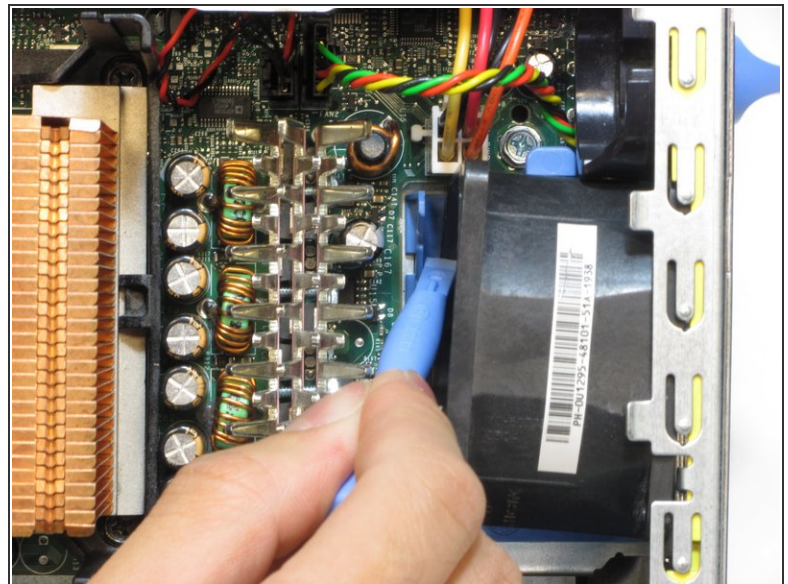
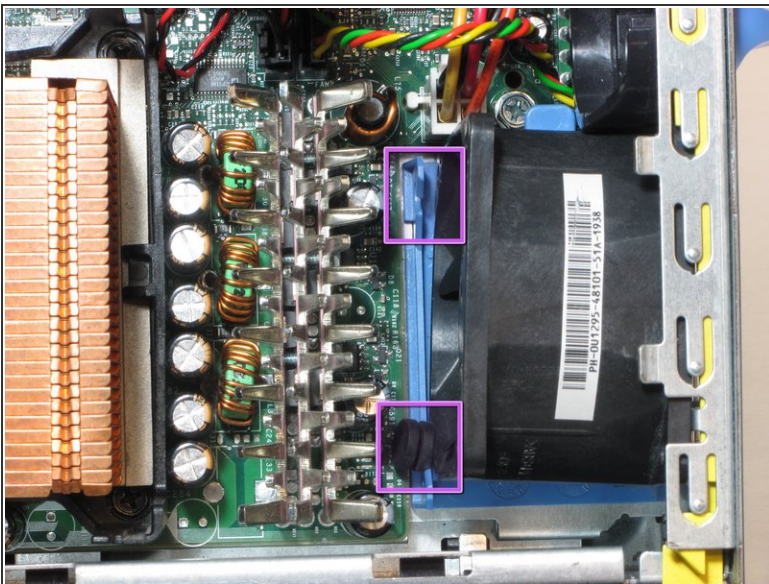
- Remove the large blue cover from the computer. There are no screws or tabs holding it in place.

Step 5



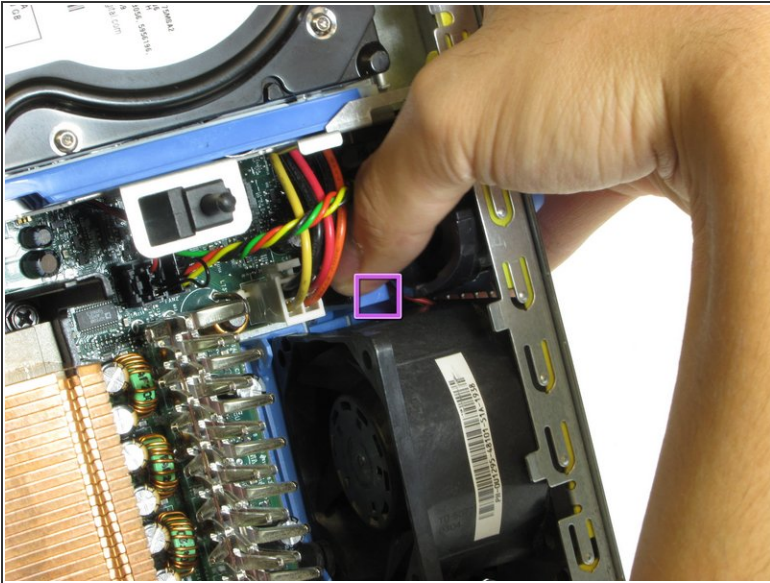
- Remove the power supply that connects the lower fan to the motherboard, distinguished by its black, red, green and yellow wires.
- ⓘ Make sure to press on the release tab while removing the power supply.

Step 6



- Remove the rubber grommets from the base of the fan. A spudger may be useful.

Step 7



- Press on the blue release tab and remove the fan.

To reassemble your device, follow these instructions in reverse order.